

HRC | Highly Resilient Coupling



The entire line of Haley HRC coupling utilize the durable, multi-element elastomeric design. The low natural frequencies arising from the dynamic stiffness properties of the elastomers make the HRC line of couplings ideally suited for industrial applications and marine propulsion systems. Each HRC coupling consists of multiple elastomer elements mounted perpendicularly to the axis of rotation. The design assures tri-axis flexibility, high torsional elasticity, and high relative damping. The elastomeric characteristics allow for shaft displacements due to thermal expansions, external vibrations and misalignment due to settling and installation. Available in 11 basic sizes for each configuration from 36,000 to 780,000 lb.in.



HRC

Size	Rating
HRC36K	36,000 lb.in
HRC50K	50,000 lb.in
HRC63K	63,000 lb.in
HRC105K	105,000 lb.in
HRC150K	150,000 lb.in
HRC185K	185,000 lb.in

Size	Rating
HRC270K	270,000 lb.in
HRC390K	390,000 lb.in
HRC540KD*	540,000 lb.in
HRC650K	650,000 lb.in
HRC780KD*	780,000 lb.in

*Dual sizes available.

80 Series

The 80 series allows the maximum angular, radial and axial misalignment. The inner hub of the HRC coupling must be supported by the gearbox, generator, or pump input shaft for this series.



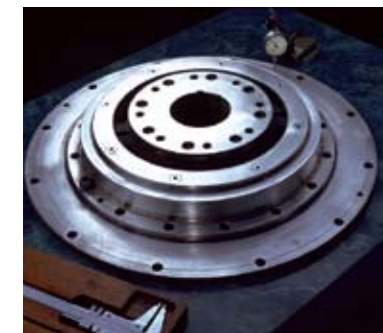
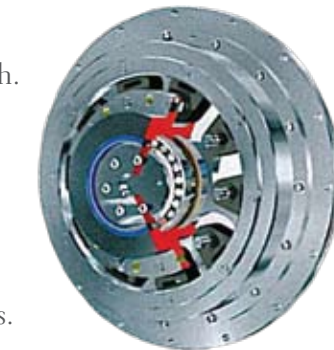
81 Series

The 81 series allows angular misalignment. A spherical bearing for support of the inner hub of the HRC is mounted to the flywheel.



82 Series

The 82 series is designed for installation with a pneumatic clutch. The existing pneumatic clutch spacer is removed and replaced with a HRC coupling without moving the engine, gearbox, generator, or pump foundations. The coupling inner hub is supported on tapered roller bearings, so angular and radial runout must be compensated for by the pneumatic clutch glands.



Mississippi Location:

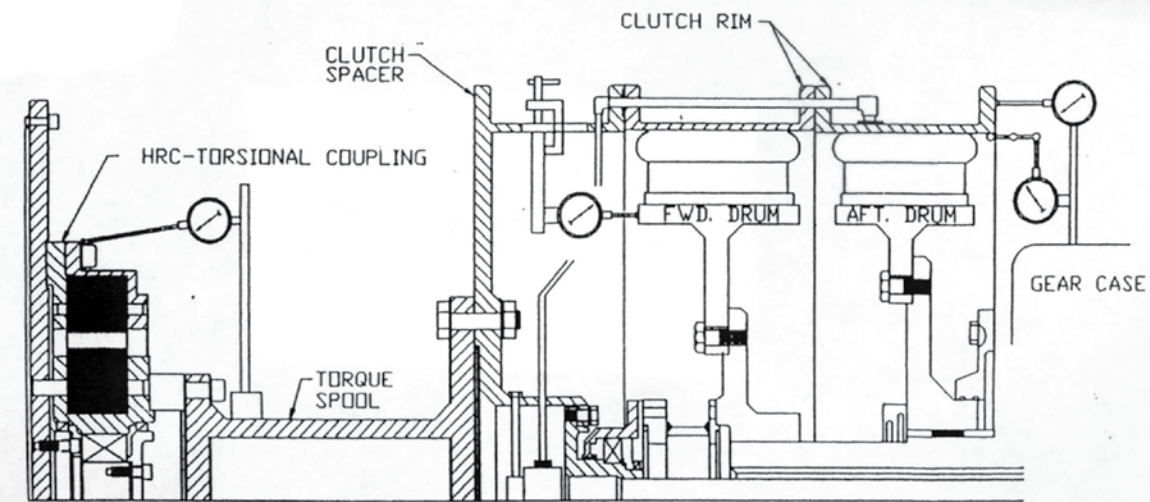
1690 Highway 1 North :: Greenville, Mississippi 38703
phone: 662.332.8716 :: fax: 662.335.4322

Louisiana Location:

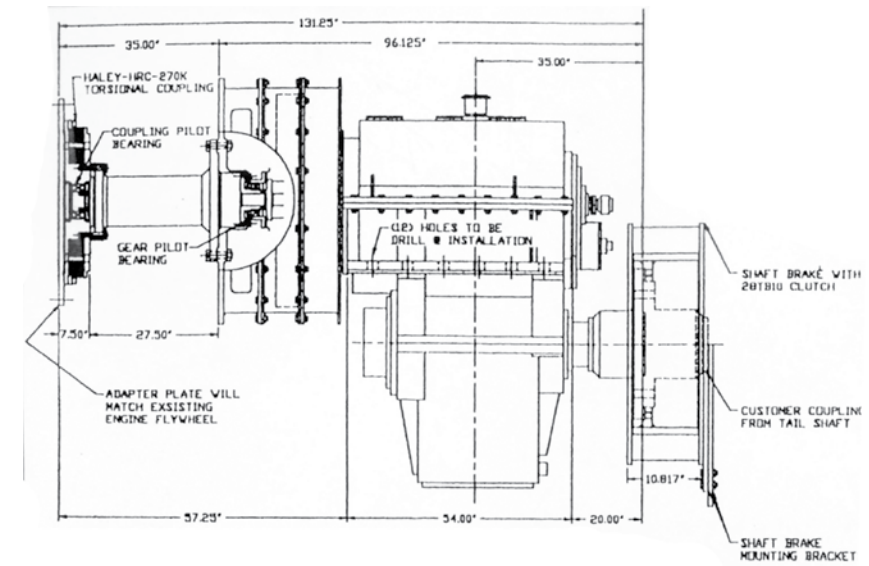
1245 Peter's Road :: Harvey, Louisiana 70058
phone: 504.361.7747 :: fax: 504.361.9953 :: toll: 800-227-9198

HRC

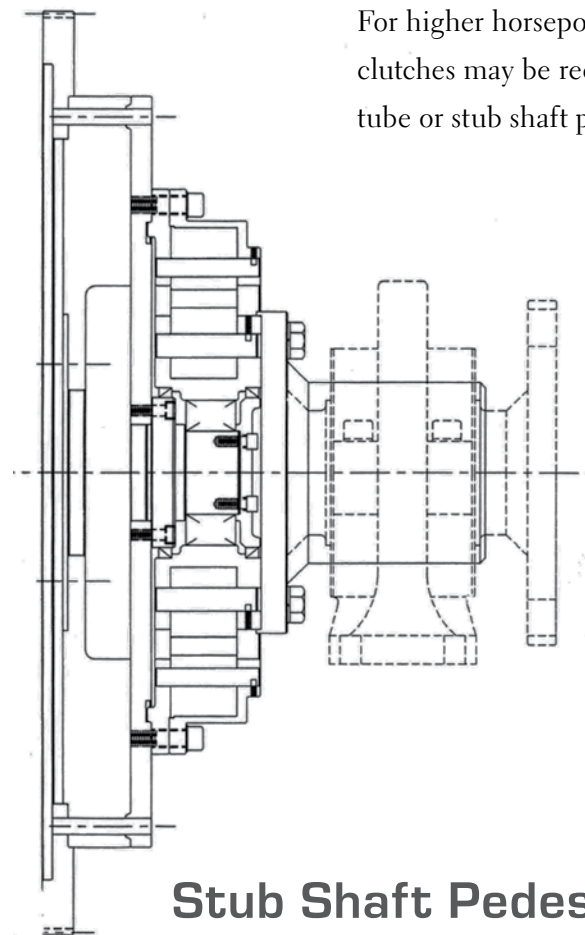
Stub Shaft Pedestal Bearing Assembly Torque Tube Assembly



Torque Tube Assembly

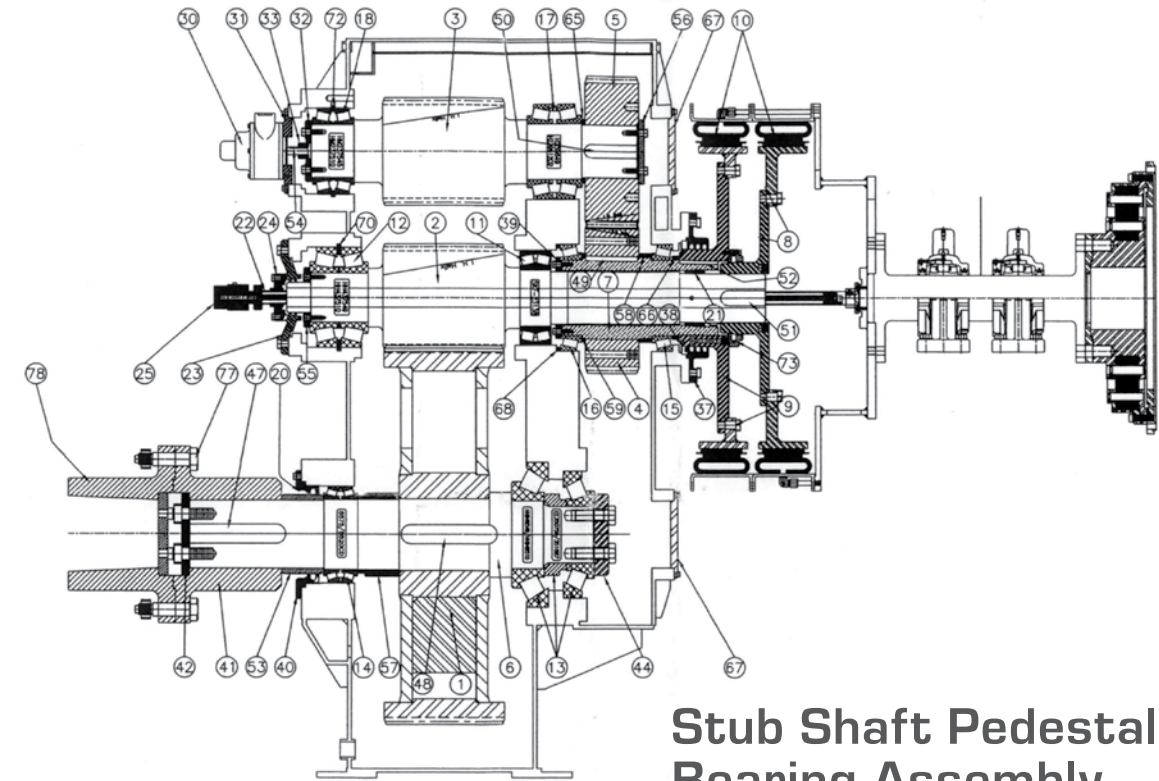


Torque Tube Assembly



Stub Shaft Pedestal Bearing Assembly

For higher horsepower applications, larger clutches may be required with torque tube or stub shaft pedestal arrangements.



Stub Shaft Pedestal Bearing Assembly

Mississippi Location:
1690 Highway 1 North :: Greenville, Mississippi 38703
phone: 662.332.8716 :: fax: 662.335.4322

Louisiana Location:
1245 Peter's Road :: Harvey, Louisiana 70058
phone: 504.361.7747 :: fax: 504.361.9953 :: toll: 800-227-9198