

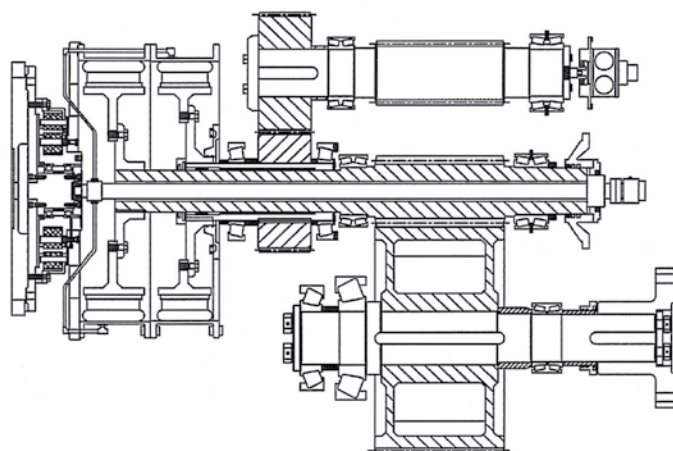
FMCV : Flywheel Mounted Clutch
Vertical Gears

FMCH : Flywheel Mounted Clutch
Horizontal Gears



FMCV Series

Flywheel mounted clutch, reversing gear units with vertical shaft offsets. Standard horsepower ranges are from 1200 hp to 5000 hp and standard ratios are from 1.5:1 to 6.0:1.



FMCH Series

Flywheel mounted clutch, reversing gear units with horizontal shaft offsets. Standard horsepower ranges are from 1200 hp to 5000 hp and standard ratios are from 1.5:1 to 6.0:1.

Gear Elements

This series of gears can use two types of gear elements. (1) The reliable conservative, and economical through hardened 4340 steel, precision hobbed gear elements of (2) the carburized hardened and precision ground elements with an increase of up to 50% rating in the same gear case.

Clutches

The FMC gears use TR (Torsionall Resilient) flywheel mounted clutches that add rotating mass and excellent dampening to mass elastic systems. For higher horsepower applications, larger clutches may be required with torque tube or stub shaft pedestal arrangement

Bearings

All bearings are current production of tapered roller or spherical roller bearings manufactured in the U.S. by leading manufacturers.

Gear Cases

Gear cases are fabricated in our Greenville facility by experienced and skilled fabrication engineers. New standard cases as well as special cases can be completed in a few weeks.

Lube Systems

Oil pressure flow from precision gear pumps, with dual fine mesh cleanable filter. Suitable coolers of any type are available.

Controls

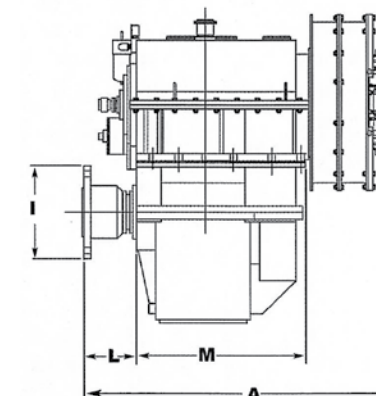
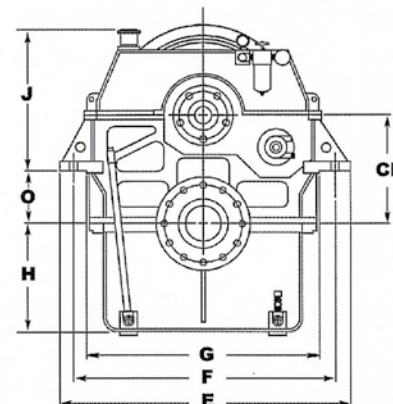
The latest versions of clutch and system controls are available in both electric and pneumatic activation for standard slip or dynamic positioning systems.

Engineering Assistance

CAD engine and gear installation drawings, lube, and cooling system drawings. Torsional analysis or mass elastic data available. Start up and service engineers available at all times.

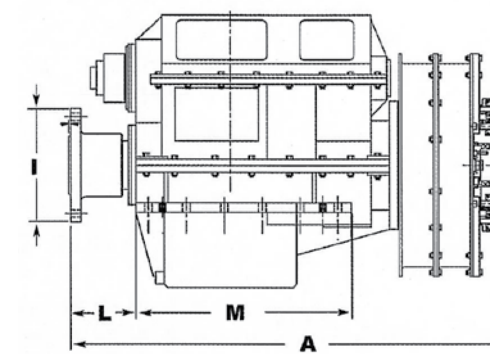
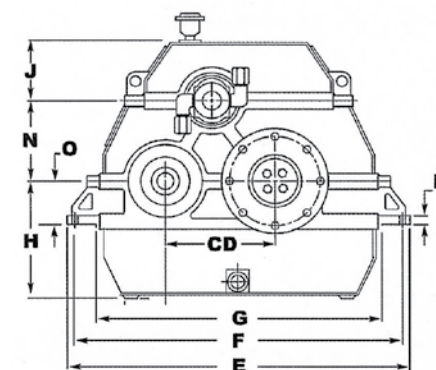
Special center distance available upon request. Consult engineering department for installation drawings and/or for selection of torque tube assembly or stub shaft pedestal bearing arrangement for larger clutches. (See pages 14-15.)

FMCV



Model	HP	RPM	Ratio	A	CD	D	E	F	G	H	I	J	L	M	O
FMCV-1930	1500/1950	800/1000	2.5/4.25:1	83.00	19.00	1.75	54.00	50.00	43.50	20.00	17.50	14.00	21.31	39.81	na
				2100	480	45	1370	1270	1105	510	445	355	540	1010	na
FMCV-2135	1800/2100	800/1000	2.5/4.25:1	89.75	20.88	2.00	67.00	63.00	56.50	24.50	19.00	18.50	22.00	49.00	na
				2280	530	50	1700	1600	1435	620	480	470	559	1245	na
FMCV-2435	2000/2400	800/1000	2.5/4.25:1	89.75	24.00	2.00	67.00	63.00	52.00	24.50	20.81	18.50	24.00	49.00	na
				2280	610	50	1700	1600	1320	620	530	470	610	1245	na
FMCV-2535	2000/2400	800/1000	2.5/5.0:1	89.87	25.00	2.00	67.00	63.00	55.00	27.00	23.50	30.50	24.00	49.00	12.50
				2285	635	50	1700	1600	1400	685	595	775	610	1245	320
FMCV-2835	2250/2800	800/1000	3.0/5.5:1	89.87	27.56	2.00	67.00	63.00	55.00	27.00	23.50	30.50	24.00	49.00	15.50
				2285	700	50	1700	1400	1400	685	595	775	610	1245	395
FMCV-3235	2500/3600	800/1000	3.0/6.0:1	92.00	31.50	2.50	72.00	68.00	56.25	28.12	24.50	36.00	26.00	52.50	16.00
				2335	813	64	1829	1727	1429	714	622	914	660	1334	406
FMCV-4035	3500/5000	800/1000	3.0/6.5:1	102.00	40.25	3.00	76.75	68.00	58.00	29.25	26.25	42.00	28.00	56.25	16.00
				2591	1022	76	1949	1727	1473	743	667	1067	711	1429	406

FMCH



Model	HP	RPM	Ratio	A	CD	D	E	F	G	H	I	J	L	M	N	O
FMCH-2135	1800/2100	800/1000	2.5/4.25:1	89.87	20.875	2.00	66.50	63.12	54.38	26.25	20.37	13.00	13.25	44.00	17.18	9.25
				2285	530	50	1690	1605	1380	665	520	330	335	1120	435	235
FMCH-2435	2000/2400	800/1000	2.5/4.25:1	89.87	24.00	2.00	69.50	65.40	57.00	26.75	21.50	13.00	13.25	44.00	na	9.75
				2285	610	50	1765	1660	1450	680	545	330	335	1120	na	250
FMCH-2635	2000/2400	800/1000	2.5/4.25:1	89.87	26.00	2.00	87.50	78.50	65.00	27.50	21.50	15.00	15.00	44.00	na	9.75
				2285	660	50	2200	1995	1650	700	545	380	380	1120	na	250
FMCH-2835	2250/2800	800/1000	2.5/5.0:1	89.87	27.56	2.50	80.00	76.00	67.00	27.50	23.50	15.00	16.00	44.00	na	9.75
				2285	700	65	2030	1930	1700	700	595	380	406	1120	na	250
FMCH-3235	2500/3600	800/1000	3.0/6.0:1	92.00	31.50	2.50	87.50	83.00	74.87	35.50	23.50	16.00	17.12	45.00	na	11.00
				2335	800	65	990	2110	1900	900	595	405	435	1145	na	280
FMCH-4035	3500/5000	800/1000	3.0/6.0:1	102.00	40.00	3.00	91.25	85.00	79.00	42.50	28.00	16.00	18.25	48.00	na	12.00
				2591	1016	76	2318	2159	2007	1080	711	406	464	1219	na	305