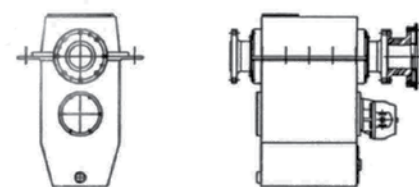


HADU

Haley Auxiliary Drive Units



IHC Series

In-line Hydraulic Clutch. Completely self contained with pumps, lube oil systems, filters and control valves

capable of limited slipping. Front engine crank shaft drive for fire pumps or other equipment up to 500hp @ 1800 rpm. (See pages 22-23.)

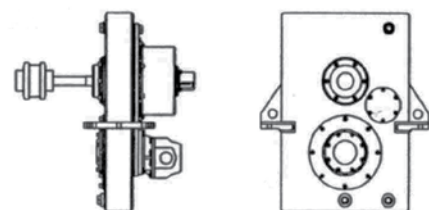
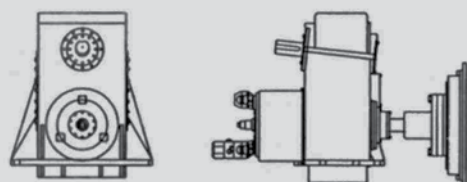
ADV Series

Angular Drive Vertical

offset gears are special units with angled output drives. Best for Z-Drive

units which require the drive shaft be in direct line with the output shaft, this eliminates expensive cardigan shafts.

It comes in one of three different hydraulic drive systems, including torsionally resilient couplings and clutches with slip mode.



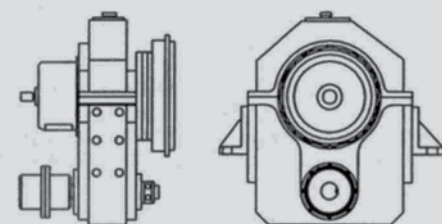
V-1200 Series

Vertical offset version of extended shaft unit with pneumatic clutch for mounting directly off the main engine

front crank shaft. Suitable for driving hydraulic pumps or other auxiliary drives. Rating up to 300hp.

V-1500 SAE

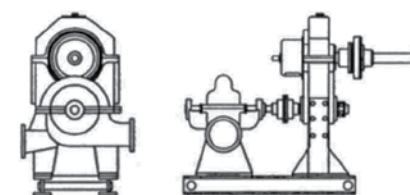
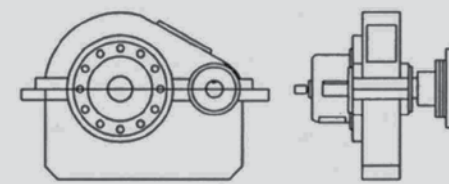
Flywheel housing mounted unit complete with pneumatic clutches, input rotor seals, and controls. The units are capable of increasing or decreasing RPM. Excellent for hydraulic drives, fire pump drives generator drive, etc. up to 1500hp.



H-1600 Series

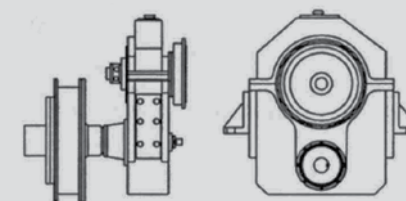
Horizontal offset drive for fire pumps, generators, air compressors, large hydraulic systems, etc.

Suitable for up to 1600hp. Ratios can be spread increasers or decreaseers.



V-1600 Series

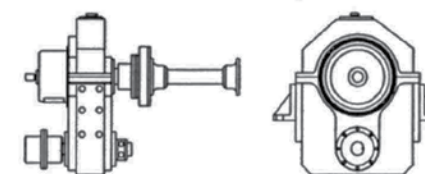
Vertical offset unit that is well suited for driving large fire pumps. Unit has extended shaft to clear front of engine auxiliaries. Capacity up to 1600hp with 1800 pump rpm.



V-1600 Series SAE

Vertical offset unit with HRC torsional coupling mounting to SAE flywheel. It includes a self-contained

pump. It may also come complete with torsionally resilient pneumatic clutch on output shaft for starting and disengaging heavy loads. Unit rates up to 1600hp with heavy mass driven equipment.



V1500 Series

Vertical offset unit with extended shaft. The torsional coupling and pneumatic clutch are suitable for large hydraulic systems, fire pumps, generators or compressors. Rates up to 1500 hp.

Mississippi Location:

1690 Highway 1 North :: Greenville, Mississippi 38703
phone: 662.332.8716 :: fax: 662.335.4322

Louisiana Location:

1245 Peter's Road :: Harvey, Louisiana 70058
phone: 504.361.7747 :: fax: 504.361.9953 :: toll: 800-227-9198